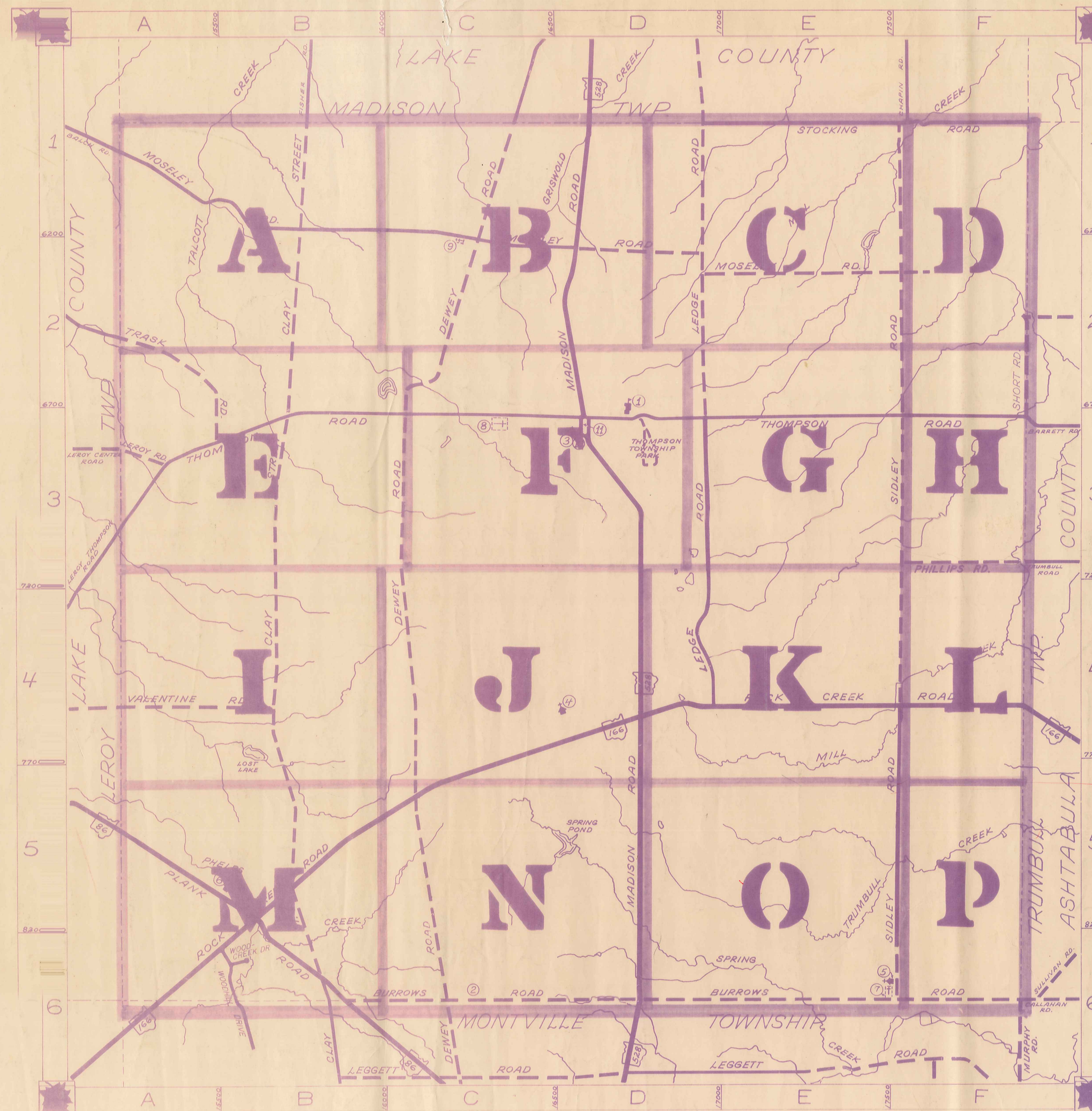


ROAD INDEX



| | | | |
|---|------------------------------------|---|-----------------------------------------------------------|
| A | I cont. | R | ROCK CREEK RD. A6-F4 |
| | J | | |
| 1 | BURROWS RD. B6-F6 | S | SIDLEY RD. F1-F6 STOCKING RD. D1-F1 SHORT RD. F2-F3 |
| | K. | | |
| 2 | CLAY STREET B1-B6 | T | THOMPSON RD. A3-F3 TRASK RD. A2-A3 |
| | L | | |
| 3 | DEWEY RD. C1-C6 | U | |
| | M | | |
| 4 | | V | VALENTINE RD. A4-B4 |
| | N | | |
| 5 | | W | WOODCREEK DR. B6 WOODHILL DR. B6 |
| | O | | |
| 6 | | X | |
| | P | | |
| | PHILLIPS RD. F3 PLANK RD. A5-B6 | Y | |
| | | Z | |

① LEDGEMONT HIGH SCHOOL ⑧ MAPLE GROVE CEMETERY
 ② LEDGEMONT ELEM SCHOOL ⑨ CEMETERY
 ③ THOMPSON METHODIST CHURCH ⑩ THOMPSON VOL. FIRE DEPT.
 ④ ST. PATRICKS CHURCH ⑪ THOMPSON TOWN HALL
 ⑤ ST. PATRICKS CHURCH
 ⑥ GRACE EVANGELICAL LUTHERAN CH.
 ⑦ CEMETERY

THOMPSON TOWNSHIP
 SCALE: 1"=2000'
 ROBERT L. PHILLIPS,
 GEauga COUNTY ENGINEER

--- UNPAVED ROADS --- TOWNSHIP LINE
 --- PAVED ROADS --- COUNTY LINE

done 5-6-93



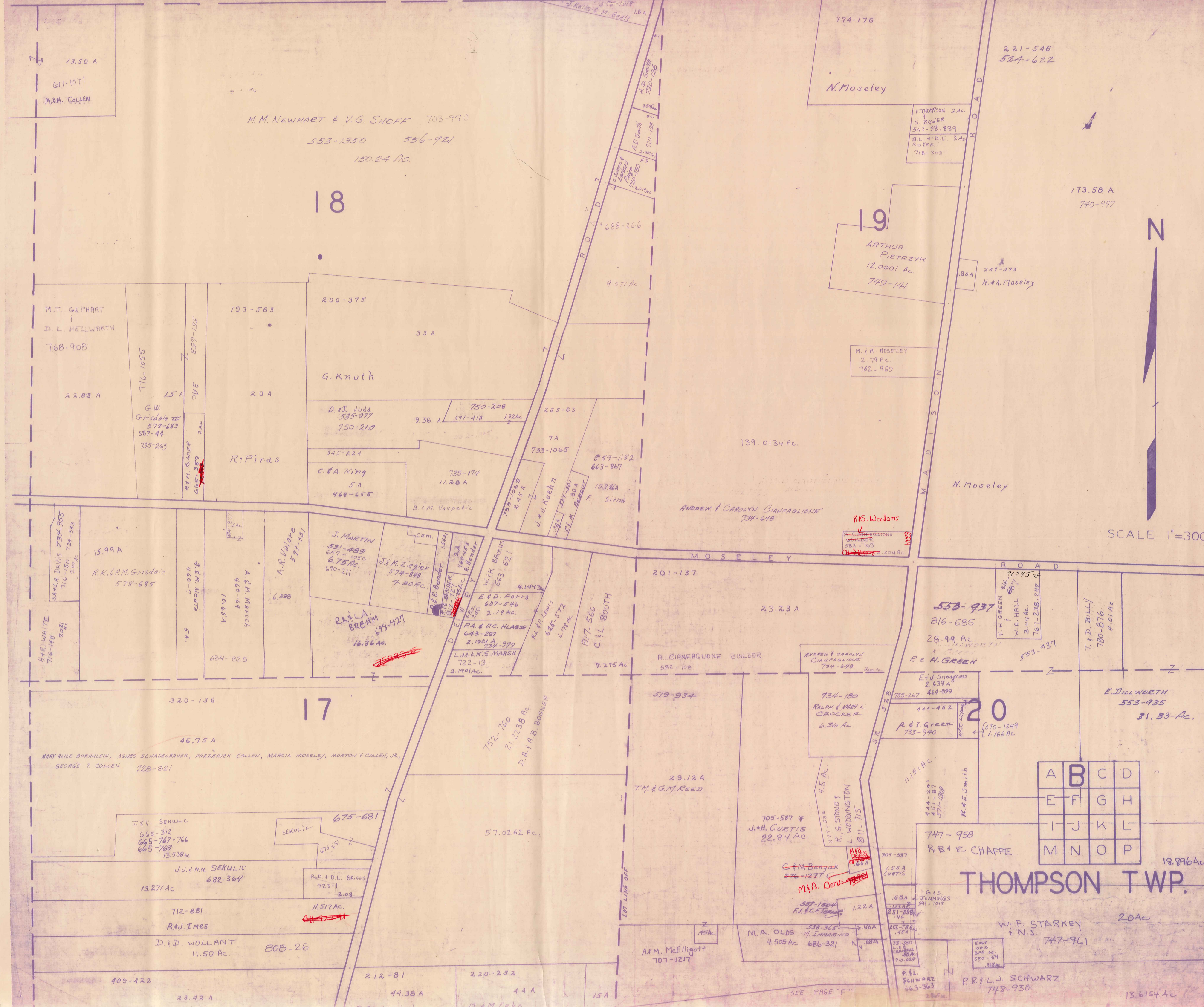
* Inadequate description

JANUARY 1, 1989

RELATIVE REPRESENTATION

| | | | |
|---|---|---|---|
| A | B | C | D |
| E | F | G | H |
| I | J | K | L |
| M | N | O | P |

LAKE COUNTY



SCALE 1"=300'

| | | | |
|---|---|---|---|
| A | B | C | D |
| E | F | G | H |
| I | J | K | L |
| M | N | O | P |

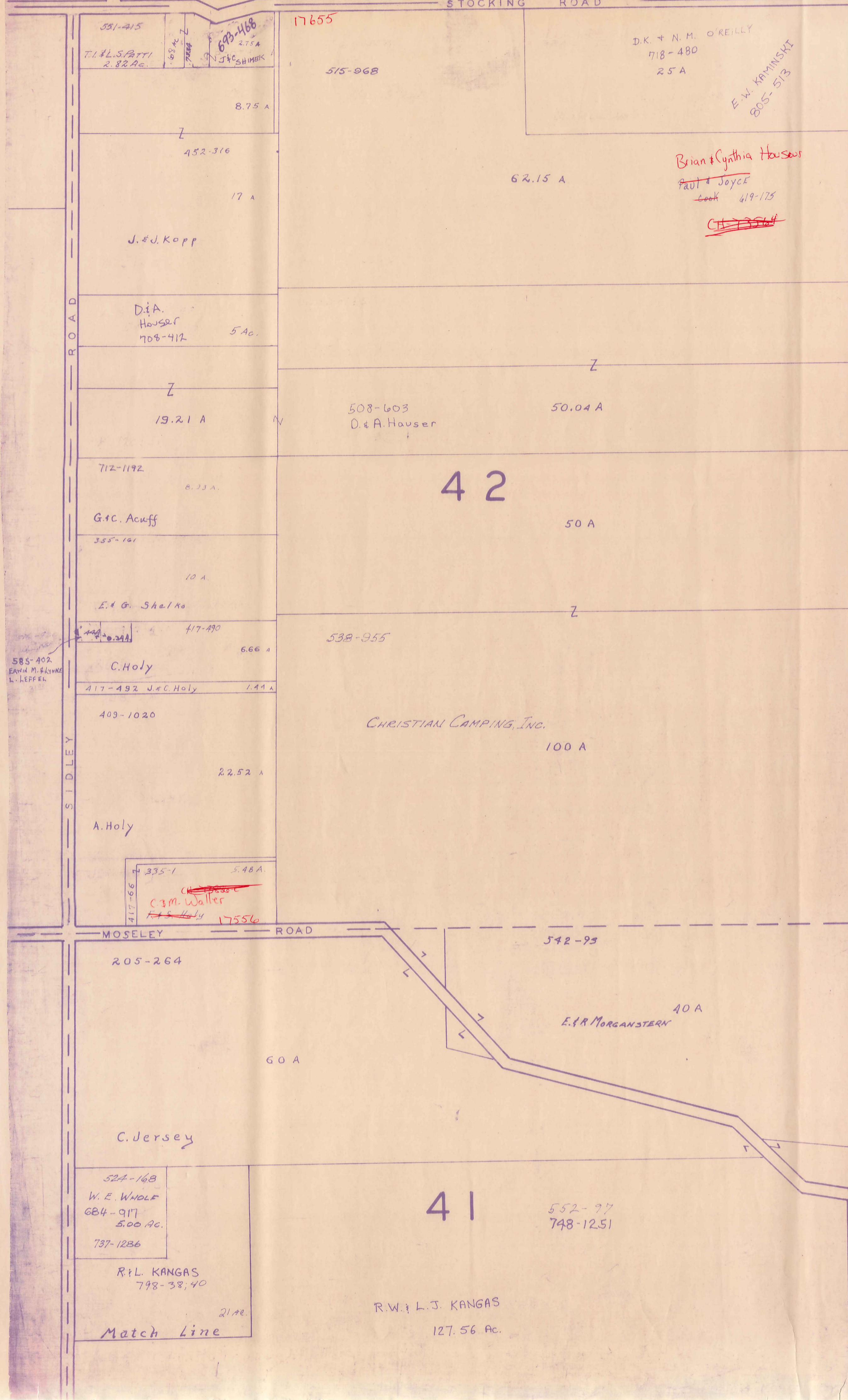
* Inadequate description

THOMPSON TWP.

JANUARY 1, 1989
RELATIVE REPRESENTATION

L A K E C O U N T Y

STOCKING ROAD



SCALE 1" = 300'

JAN. 1, 1989

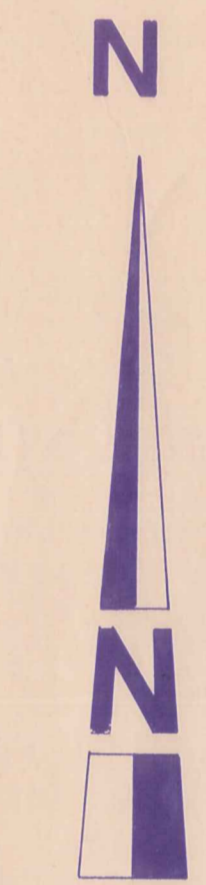
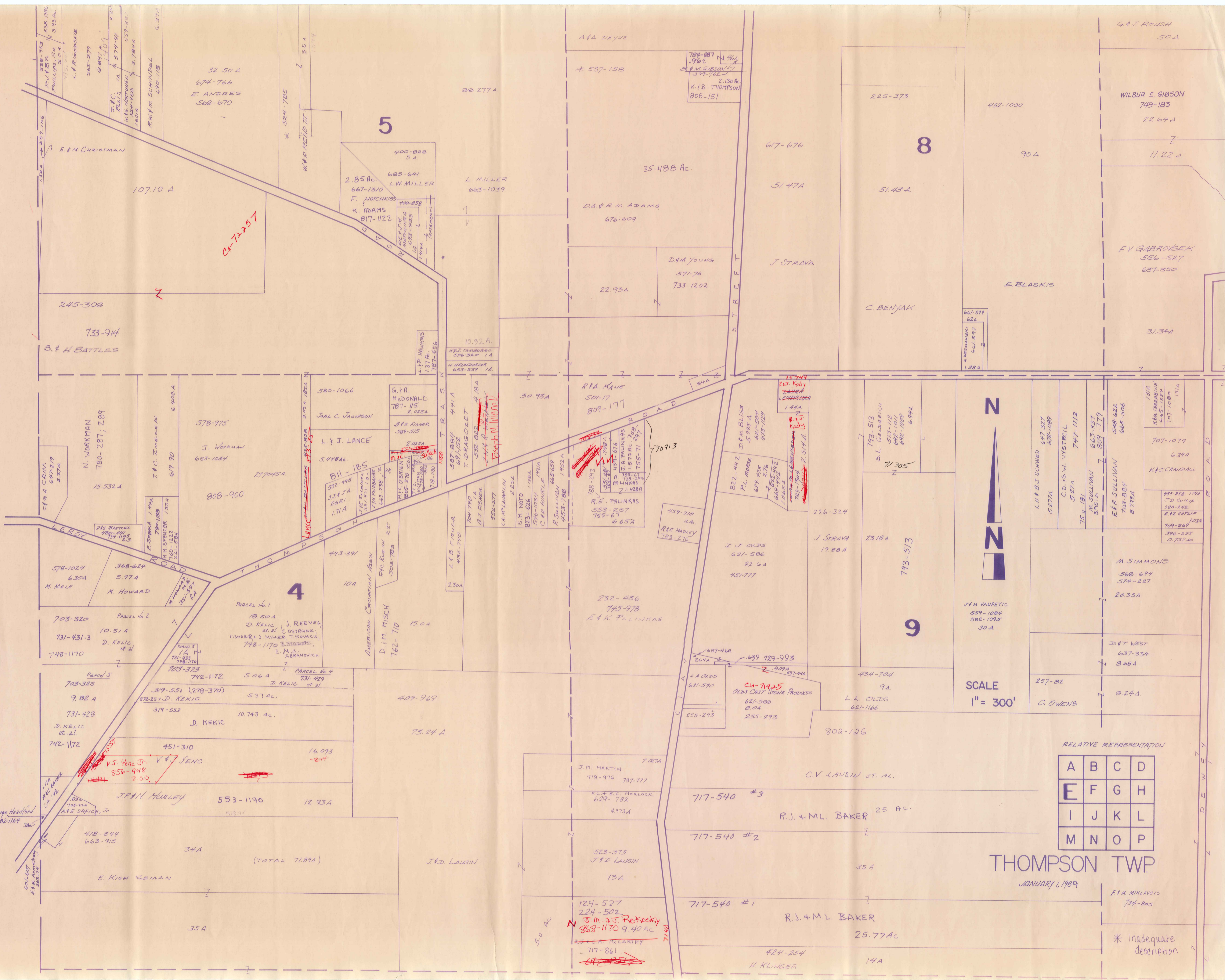
RELATIVE REPRESENTATION

| | | | |
|---|---|---|---|
| A | B | C | D |
| E | F | G | H |
| I | J | K | L |
| M | N | O | P |

THOMPSON TWP.
Match Line

COUNTY

LAKE



SCALE
1" = 300'

RELATIVE REPRESENTATION

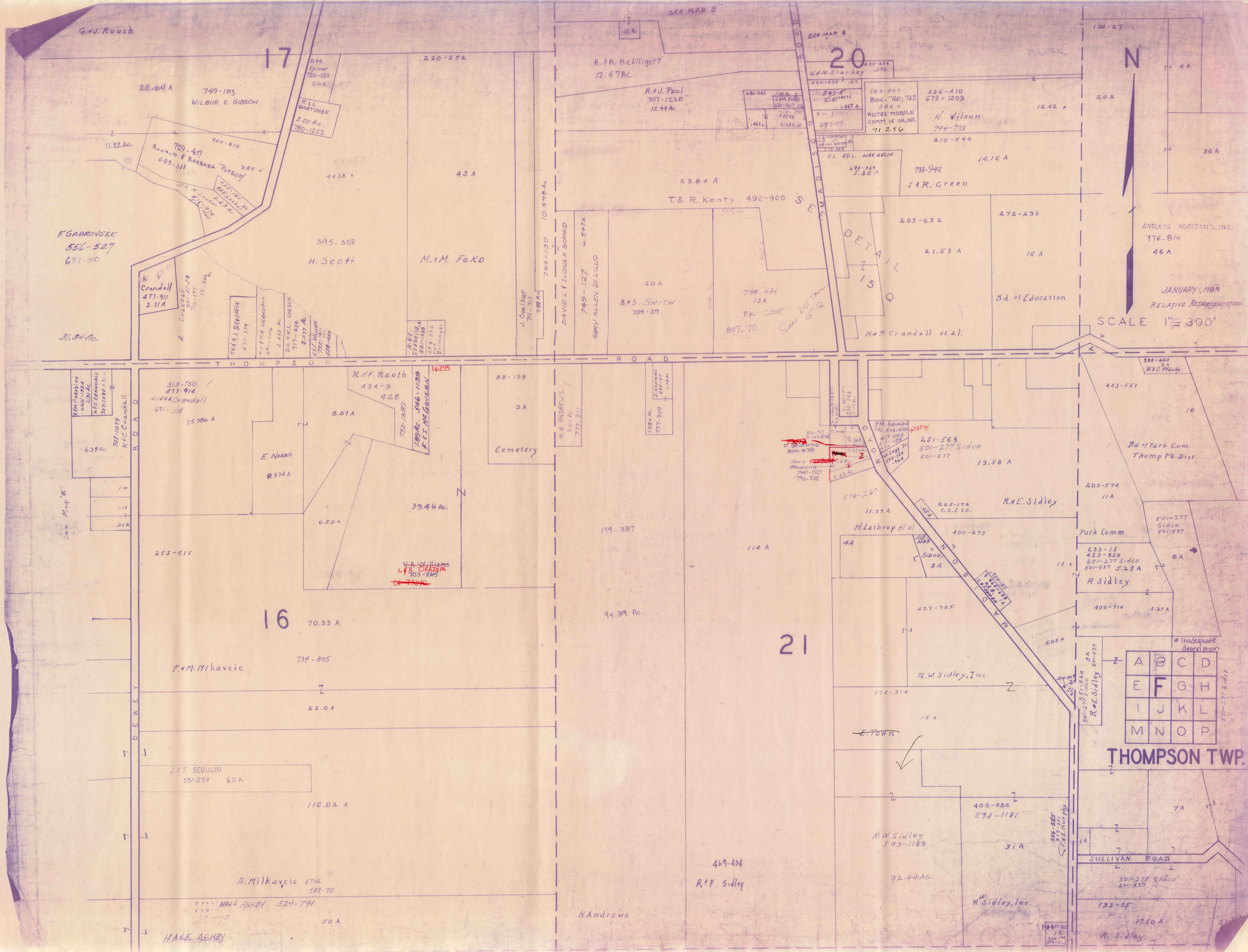
| | | | |
|---|---|---|---|
| A | B | C | D |
| E | F | G | H |
| I | J | K | L |
| M | N | O | P |

THOMPSON TWP

JANUARY 1, 1989

F.M. MICALVIC
734-805

* Inadequate description



G. J. Rouse

17

20

N

22.64 A 749-185
WILBUR E. GIBSON

11.22 Ac
729-407
RONALD & BARBARA TOPBUOY
683-311

F. GABROVSEK
556-527
637-350

31.34 Ac

R. L. BARTUNEK
2.00 Ac.
780-1252

395-358
H. Scott

M. M. Feko

A. H. McElligott
12.67 Ac.

R. J. Paul
707-1220
12.44 Ac.

W. N. Starkey
430-536
172

430-538
167

385-507
804-760, 762
3.86 A

426-410
673-1203

M. W. Starkey
677-77

ALLTEL MOBILE
COMM. OF OH, INC.
712-96

N. Wilson
744-773

210-590

E. L. WARGELIN
690-567
5.36 A

733-942
I & R. Green

29.84 A
T. & R. Keaty 492-900

203-632

272-230

21.53 A

16 A

Bd. of Education

SCALE 1" = 300'

ENDLESS HORIZONS, INC.
776-814
46 A

JANUARY 1, 1989
RELATIVE REPRESENTATION

See Map E
64-1934
KFC CRANDALL
707-1079
KFC Crandall

513-750
877-914
W. J. Crandall
671-1118
75.386 A

R. F. Rauth
434-9
4.28

88-198
SA

792-1387
109 Ac. 546-1139
R. I. McGEHEE

Cemetery

H. H. ANDREWS
3.00 Ac.
777-311

1584 Ac.
777-309

578-260
11.37 A

251-568
501-277 Sidco
501-537

19.58 A

205-574
11 A

443-557
18

Bd. of Park Com.
Thomp. Dist.

E. NORRIS
8.374 A

8.07 A

39.46 Ac.

199-387

114 A

H. Lathrop et al

205-172
C.E.L. Co.

400-673

Park Comm.

501-277
Sidco
501-537

255-415

6.50 A

70.33 A

94.39 Ac.

21

427-965

400-714
5.25 A

R. E. Sidley

233-15
423-820
501-277 Sidco
501-537 5.25 A

8 A

F. M. Mikavcic

734-805

22.04

174-319

15 A

R. W. Sidley, Inc.

501-277 Sidco
501-537

5.03 A

R. E. Sidley

* Inadequate
description

J. F. T. SEGUIN
551-239 60 A

110.02 A

469-434
R. E. Sidley

31 A

R. W. Sidley
593-183

400-886
592-1181

31 A

SULLIVAN ROAD

7 A

A. Milkavcic ETAL
582-70

50 A

H. Andrews

32.44 Ac.

R. W. Sidley, Inc.

501-277 Sidco
501-537

17.50 A

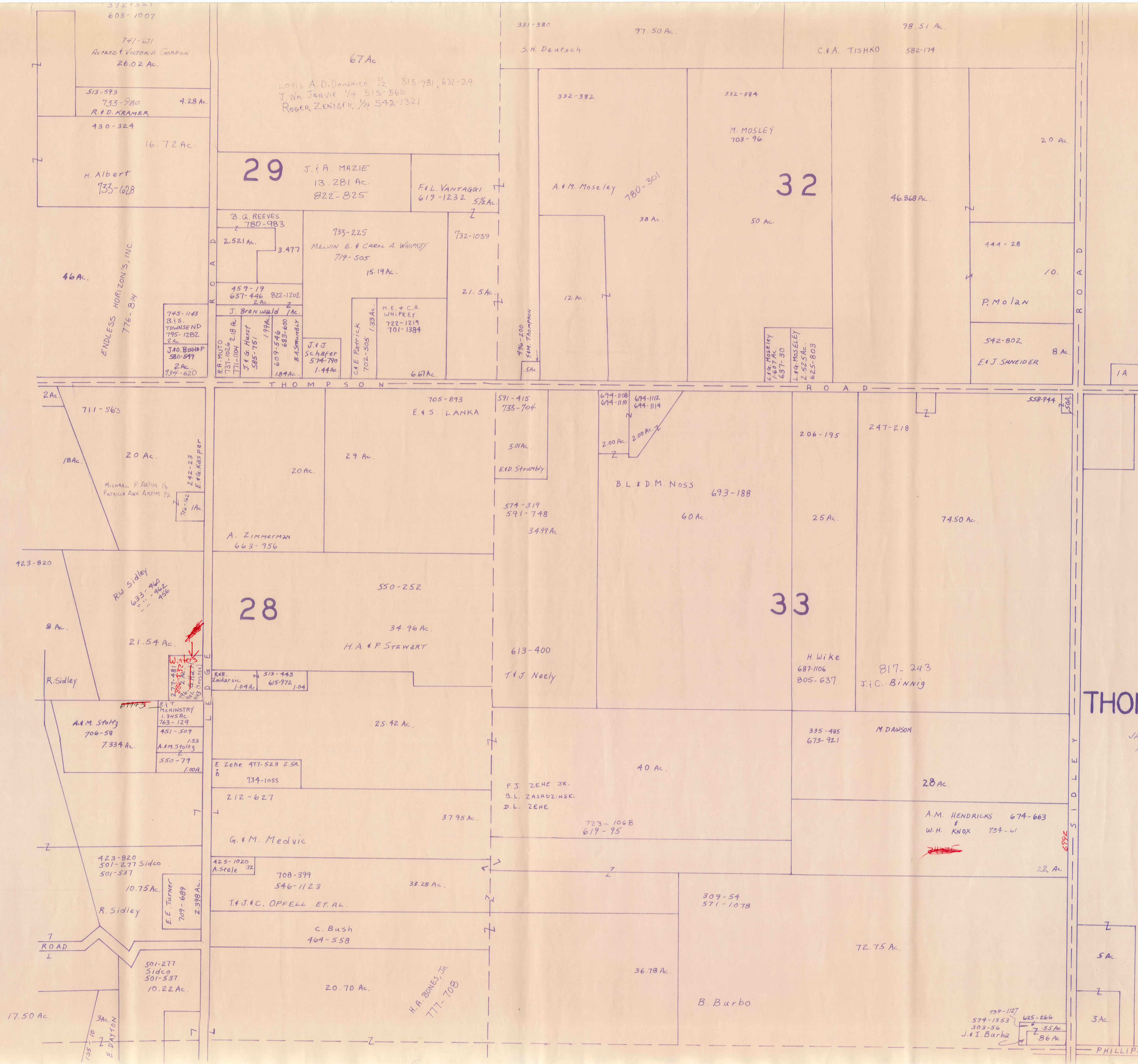
R. Sidley

17.50 A

30 A

| | | | |
|---|---|---|---|
| A | B | C | D |
| E | F | G | H |
| I | J | K | L |
| M | N | O | P |

THOMPSON TWP.



N
SCALE 1" = 300'

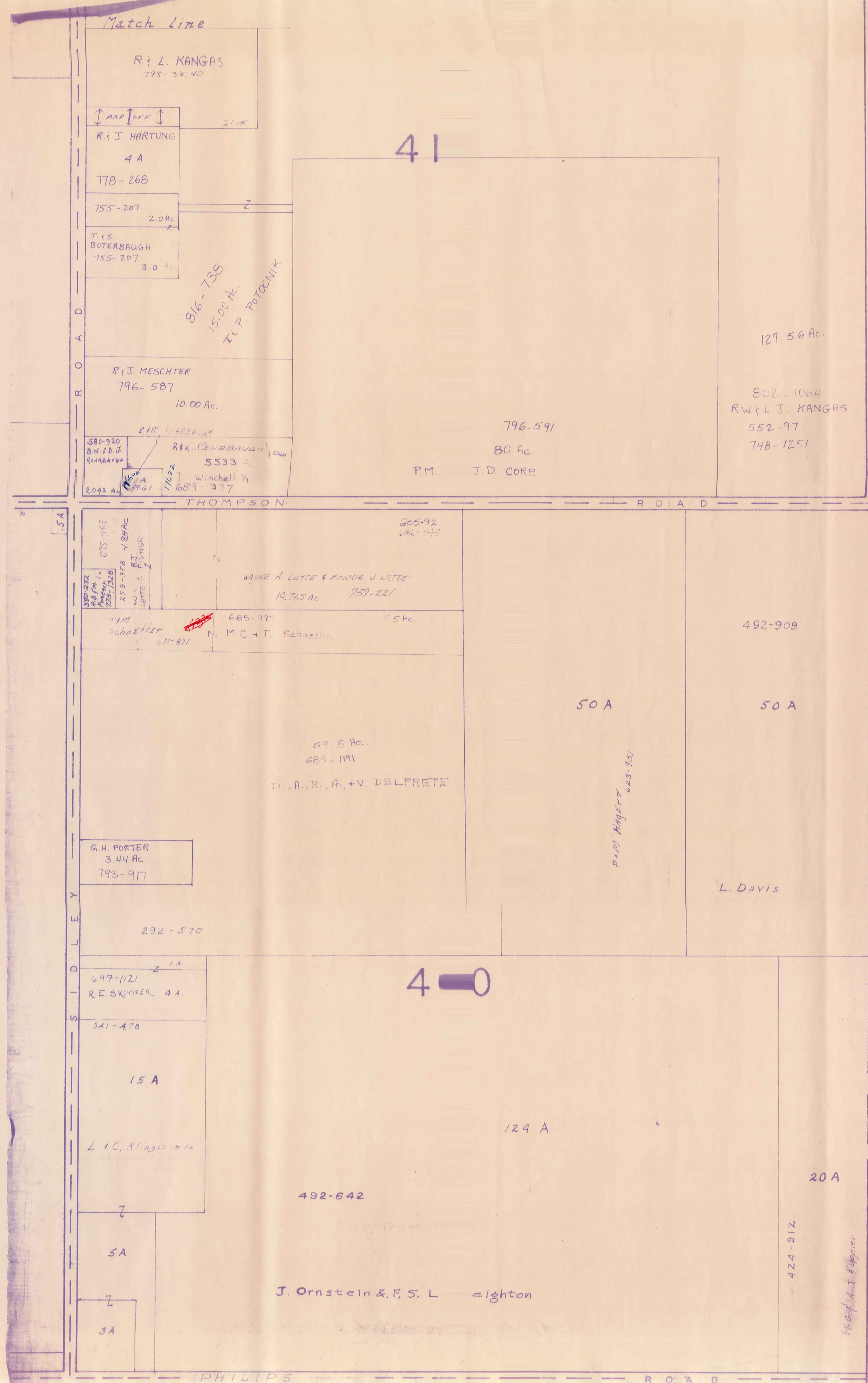
| | | | |
|---|---|---|---|
| A | B | C | D |
| E | F | G | H |
| I | J | K | L |
| M | N | O | P |

THOMPSON TWP.

JANUARY 1, 1989
RELATIVE REPRESENTATION

* Inadequate description

PHILLIPS ROAD



A S H T A B U L A C O U N T Y

Match Line



SCALE 1" = 300'

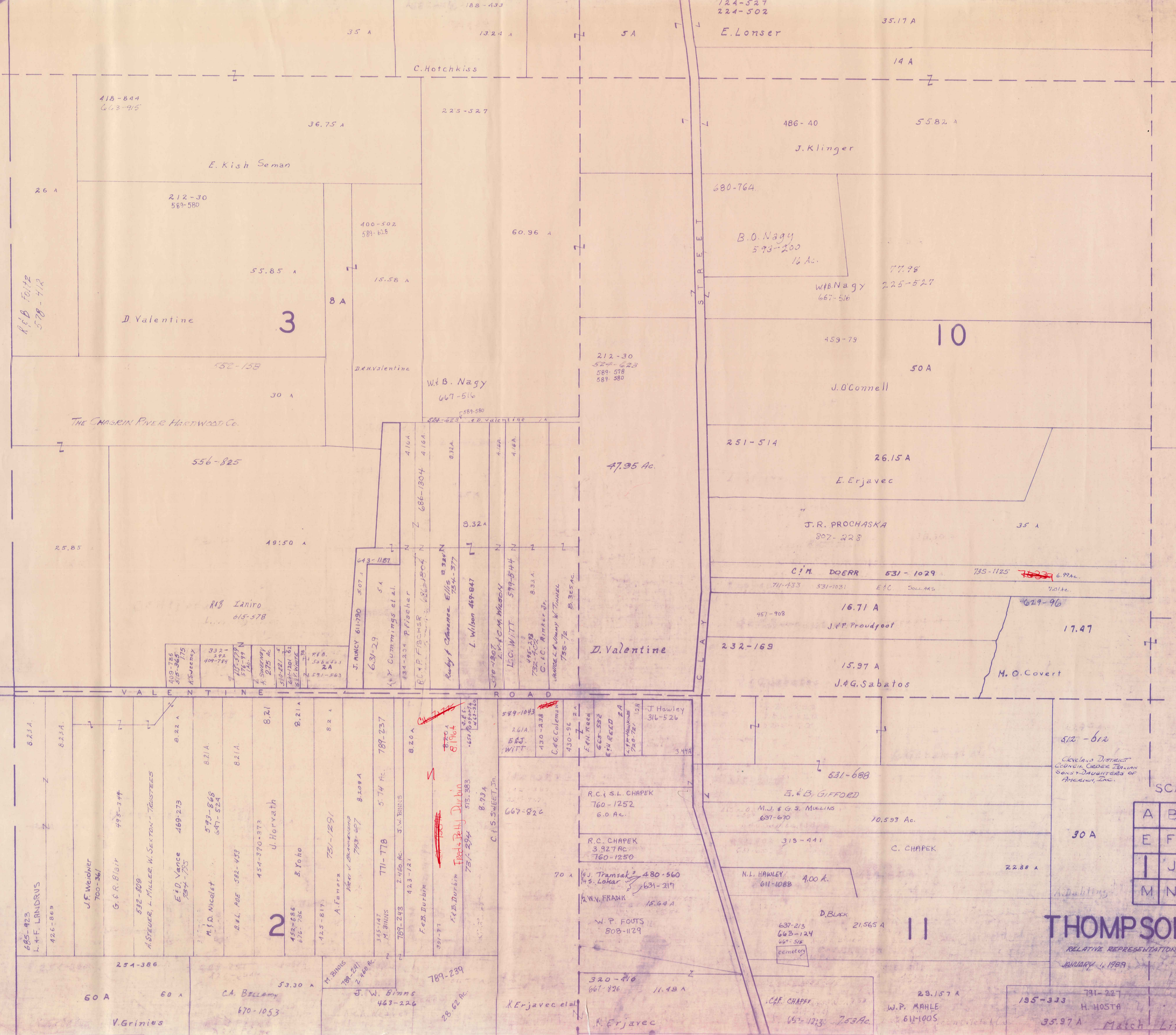
JANUARY 1, 1989
RELATIVE REPRESENTATION

| | | | |
|---|---|---|---|
| A | B | C | D |
| E | F | G | H |
| I | J | K | L |
| M | N | O | P |

T H O M P S O N T W P.

C O U N T Y

L A K E



N

* Inadequate description

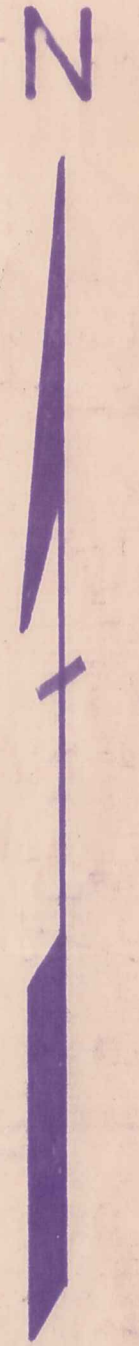
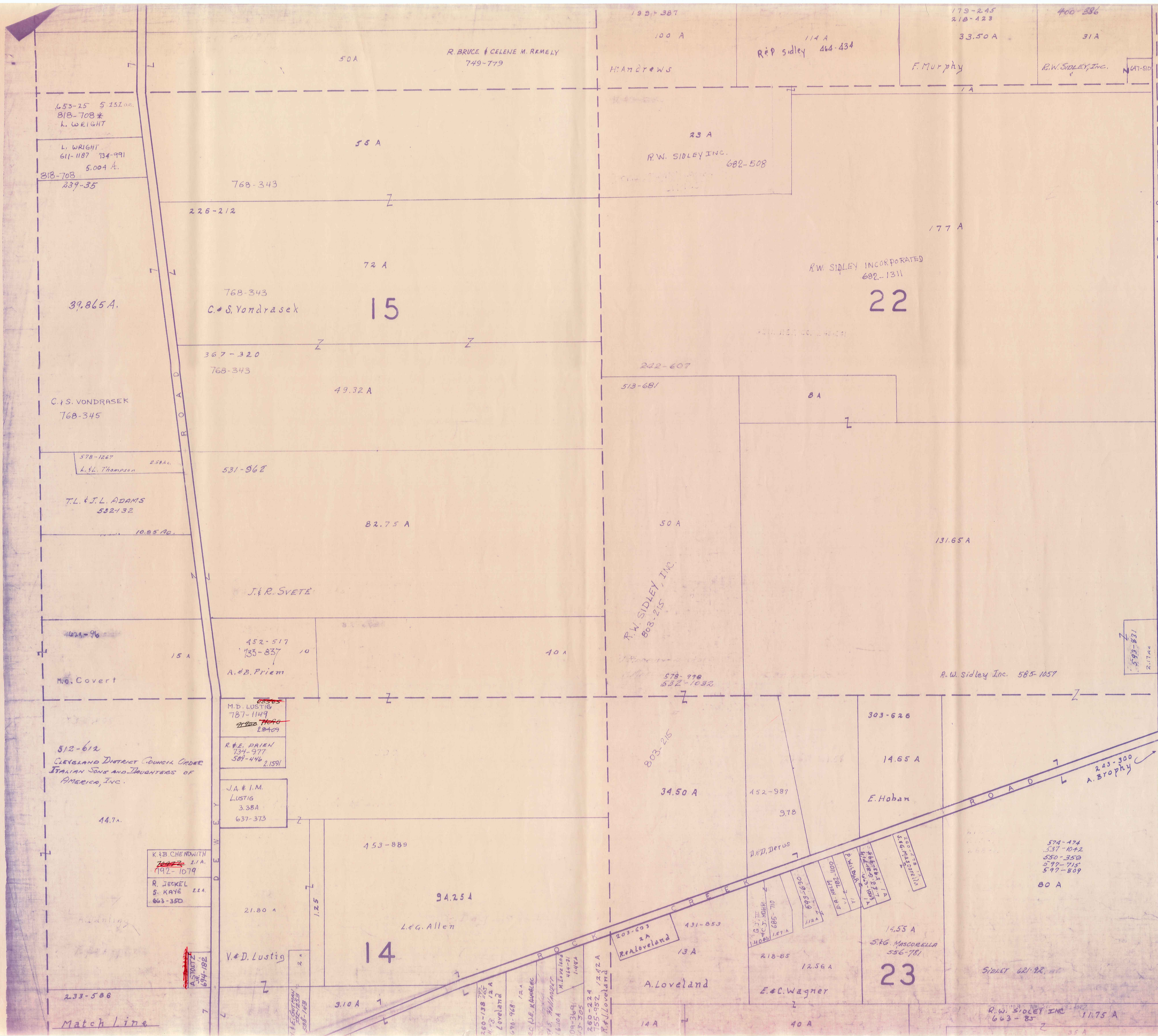
SCALE 1" = 300'

| | | | |
|---|---|---|---|
| A | B | C | D |
| E | F | G | H |
| I | J | K | L |
| M | N | O | P |

THOMPSON TWP.

RELATIVE REPRESENTATION
JANUARY 1, 1989

135-333 791-227
35.97 A H. HOSTA
Match Line



SCALE 1" = 300'

* Inadequate description

| | | | |
|---|---|---|---|
| A | B | C | D |
| E | F | G | H |
| I | J | K | L |
| M | N | O | P |

THOMPSON TWP

JAN. 1, 1989

RELATIVE REPRESENTATION

Match Line

Match Line

K & B CHENOWETH
114A
192-1079
R. JECKEL
S. KAYE
22A
663-350

M.D. LUSTIG
787-1149
R. & E. PRIEN
734-977
589-446 21591
J.A. & I.M. LUSTIG
3.38A
637-373

V. D. LUSTIG

593-831
2.17Ac

243-300
A. Brophy

574-474
537-1042
550-350
577-715
597-809
80 A

SIDLEY 621-92

R.W. SIDLEY INC
663-85

14.55 A
S. G. MASCORELLA
556-781

23

218-85
12.56 A
E. C. Wagner

40 A

13 A
A. Loveland

14 A

203-603
2A
R. Loveland

12.92 A

453-889
94.254
L. G. Allen

14

3.10 A

21.80 A
1.25

2A

15 A

452-517
735-837
A. B. Priem

688-65
787-1149
20409

734-977
589-446 21591

3.38A
637-373

1.25

21.80 A

2A

258-149

2A

10.85 Ac

452-517
735-837
A. B. Priem

10 A

787-1149
20409

734-977
589-446 21591

3.38A
637-373

1.25

21.80 A

2A

258-149

2A

10.85 Ac

452-517
735-837
A. B. Priem

10 A

787-1149
20409

734-977
589-446 21591

3.38A
637-373

1.25

21.80 A

2A

258-149

2A

258-149

2A

10.85 Ac

452-517
735-837
A. B. Priem

10 A

787-1149
20409

734-977
589-446 21591

3.38A
637-373

1.25

21.80 A

2A

258-149

2A

10.85 Ac

452-517
735-837
A. B. Priem

10 A

787-1149
20409

734-977
589-446 21591

3.38A
637-373

1.25

21.80 A

2A

258-149

2A

258-149

2A

653-25 5151.00
818-708*
L. WRIGHT

611-1187 734-991
5.004 A.
818-708
239-35

226-212

72 A

39.865 A.

768-343
C. & S. Yondrasek

367-320
768-343

49.32 A

578-1267
L. L. Thompson

531-962

82.75 A

J. & R. SVETE

452-517
735-837
A. B. Priem

15 A

512-612
CLEVELAND DISTRICT COUNCIL ORDER
ITALIAN SONS AND DAUGHTERS OF
AMERICA, INC.

44.7 A

K & B CHENOWETH
114A
192-1079
R. JECKEL
S. KAYE
22A
663-350

21.80 A

94.254
L. G. Allen

3.10 A

2.33-588

Match Line

Match Line

55 A

768-343

226-212

72 A

768-343
C. & S. Yondrasek

367-320
768-343

49.32 A

578-1267
L. L. Thompson

531-962

82.75 A

J. & R. SVETE

452-517
735-837
A. B. Priem

15 A

512-612
CLEVELAND DISTRICT COUNCIL ORDER
ITALIAN SONS AND DAUGHTERS OF
AMERICA, INC.

44.7 A

K & B CHENOWETH
114A
192-1079
R. JECKEL
S. KAYE
22A
663-350

21.80 A

94.254
L. G. Allen

3.10 A

2.33-588

Match Line

Match Line

55 A

768-343

226-212

72 A

768-343
C. & S. Yondrasek

367-320
768-343

49.32 A

578-1267
L. L. Thompson

531-962

82.75 A

J. & R. SVETE

452-517
735-837
A. B. Priem

15 A

512-612
CLEVELAND DISTRICT COUNCIL ORDER
ITALIAN SONS AND DAUGHTERS OF
AMERICA, INC.

44.7 A

K & B CHENOWETH
114A
192-1079
R. JECKEL
S. KAYE
22A
663-350

21.80 A

94.254
L. G. Allen

3.10 A

2.33-588

Match Line

Match Line

55 A

768-343

226-212

72 A

768-343
C. & S. Yondrasek

367-320
768-343

49.32 A

578-1267
L. L. Thompson

531-962

82.75 A

J. & R. SVETE

452-517
735-837
A. B. Priem

15 A

512-612
CLEVELAND DISTRICT COUNCIL ORDER
ITALIAN SONS AND DAUGHTERS OF
AMERICA, INC.

44.7 A

K & B CHENOWETH
114A
192-1079
R. JECKEL
S. KAYE
22A
663-350

21.80 A

94.254
L. G. Allen

3.10 A

2.33-588

Match Line

Match Line

55 A

768-343

226-212

72 A

768-343
C. & S. Yondrasek

367-320
768-343

49.32 A

578-1267
L. L. Thompson

531-962

82.75 A

J. & R. SVETE

452-517
735-837
A. B. Priem

15 A

512-612
CLEVELAND DISTRICT COUNCIL ORDER
ITALIAN SONS AND DAUGHTERS OF
AMERICA, INC.

44.7 A

K & B CHENOWETH
114A
192-1079
R. JECKEL
S. KAYE
22A
663-350

21.80 A

94.254
L. G. Allen

3.10 A

2.33-588

Match Line

Match Line

55 A

768-343

226-212

72 A

768-343
C. & S. Yondrasek

367-320
768-343

49.32 A

578-1267
L. L. Thompson

531-962

82.75 A

J. & R. SVETE

452-517
735-837
A. B. Priem

15 A

512-612
CLEVELAND DISTRICT COUNCIL ORDER
ITALIAN SONS AND DAUGHTERS OF
AMERICA, INC.

44.7 A

K & B CHENOWETH
114A
192-1079
R. JECKEL
S. KAYE
22A
663-350

21.80 A

94.254
L. G. Allen

3.10 A

2.33-588

Match Line

Match Line

55 A

768-343

226-212

72 A

768-343
C. & S. Yondrasek

367-320
768-343

49.32 A

578-1267
L. L. Thompson

531-962

82.75 A

J. & R. SVETE

452-517
735-837
A. B. Priem

15 A

512-612
CLEVELAND DISTRICT COUNCIL ORDER
ITALIAN SONS AND DAUGHTERS OF
AMERICA, INC.

44.7 A

K & B CHENOWETH
114A
192-1079
R. JECKEL
S. KAYE
22A
663-350

21.80 A

94.254
L. G. Allen

3.10 A

2.33-588

Match Line

Match Line

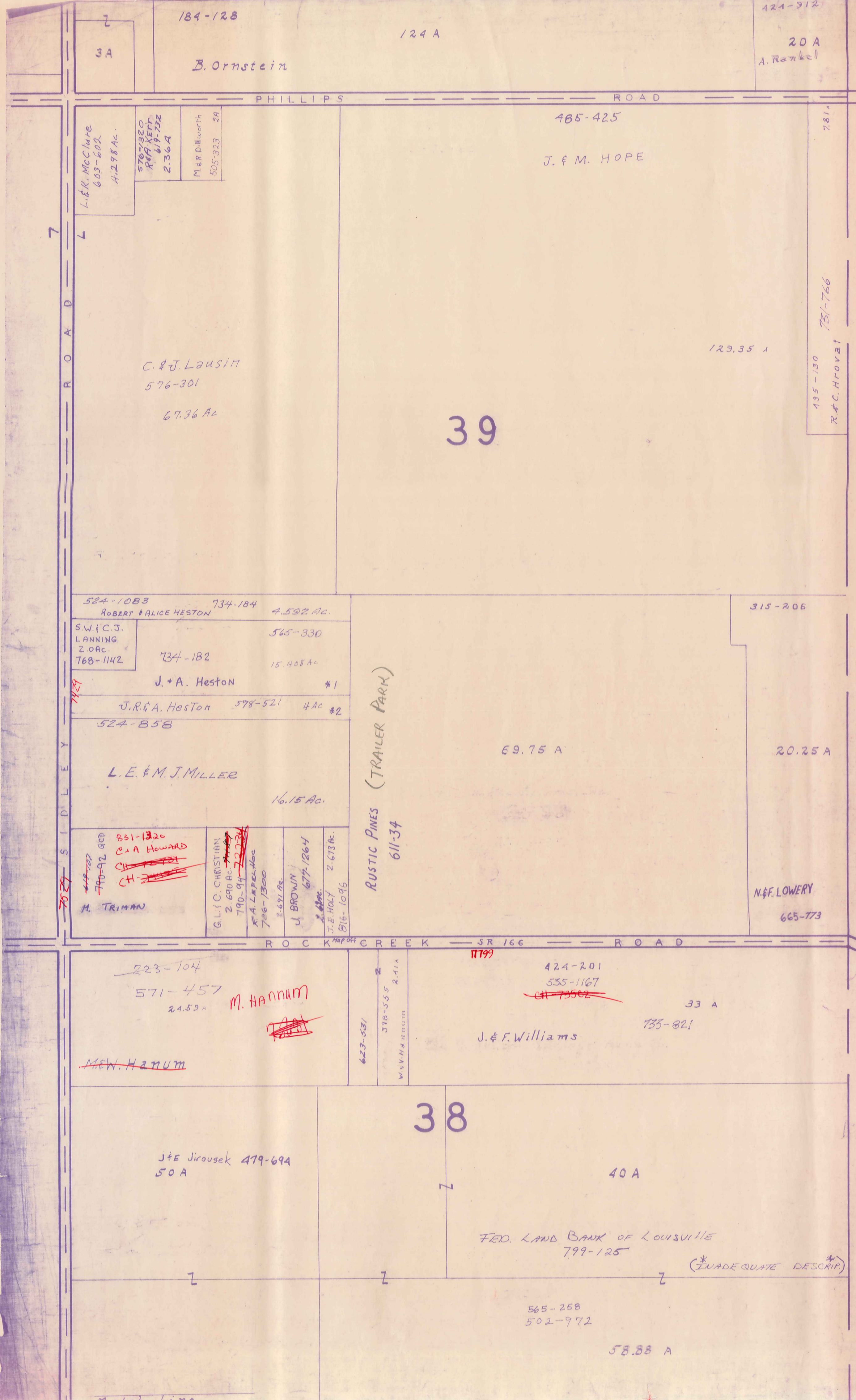
55 A

768-343

226-212

72 A

768-343
C. & S. Yondrasek



ASHTABBULA COUNTY



* Inadequate description

SCALE 1" = 300'

JAN 1, 1989
RELATIVE REPRESENTATION

| | | | |
|---|---|---|---|
| A | B | C | D |
| E | F | G | H |
| I | J | K | L |
| M | N | O | P |

NOTE: SEE PAGE K NEXT →

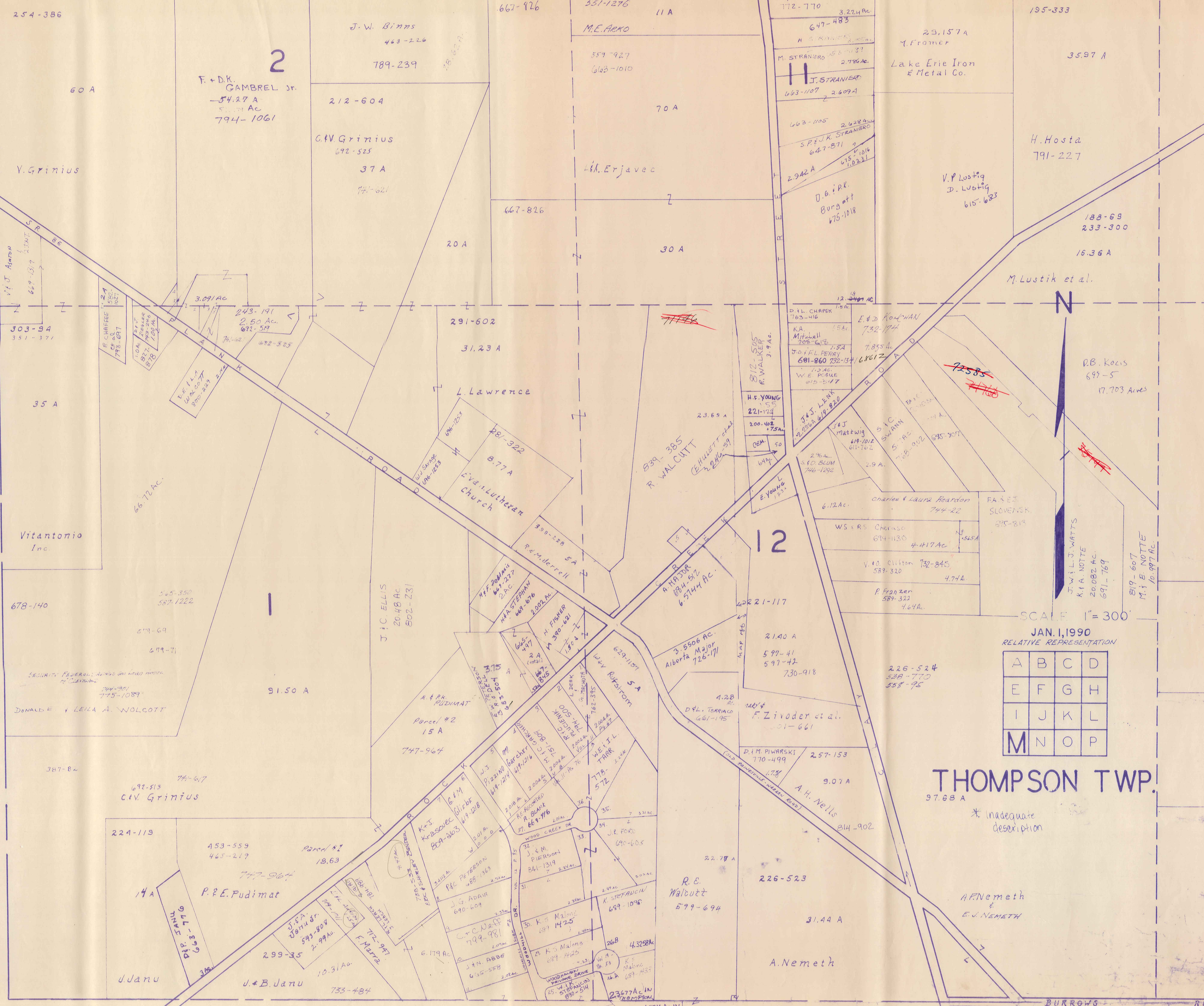
THOMPSON TWP.

Match Line

L A K E C O U N T Y

Match Line

Match Line



2
 F. + D.K. GAMBREL Jr.
 54.27 A
 794-1061

G.V. Grinius
 692-525
 37 A
 77-621

291-602
 31.23 A
 L. Lawrence

Eva Lutheran Church
 8.77 A

12

THOMPSON TWP.
 97.68 A

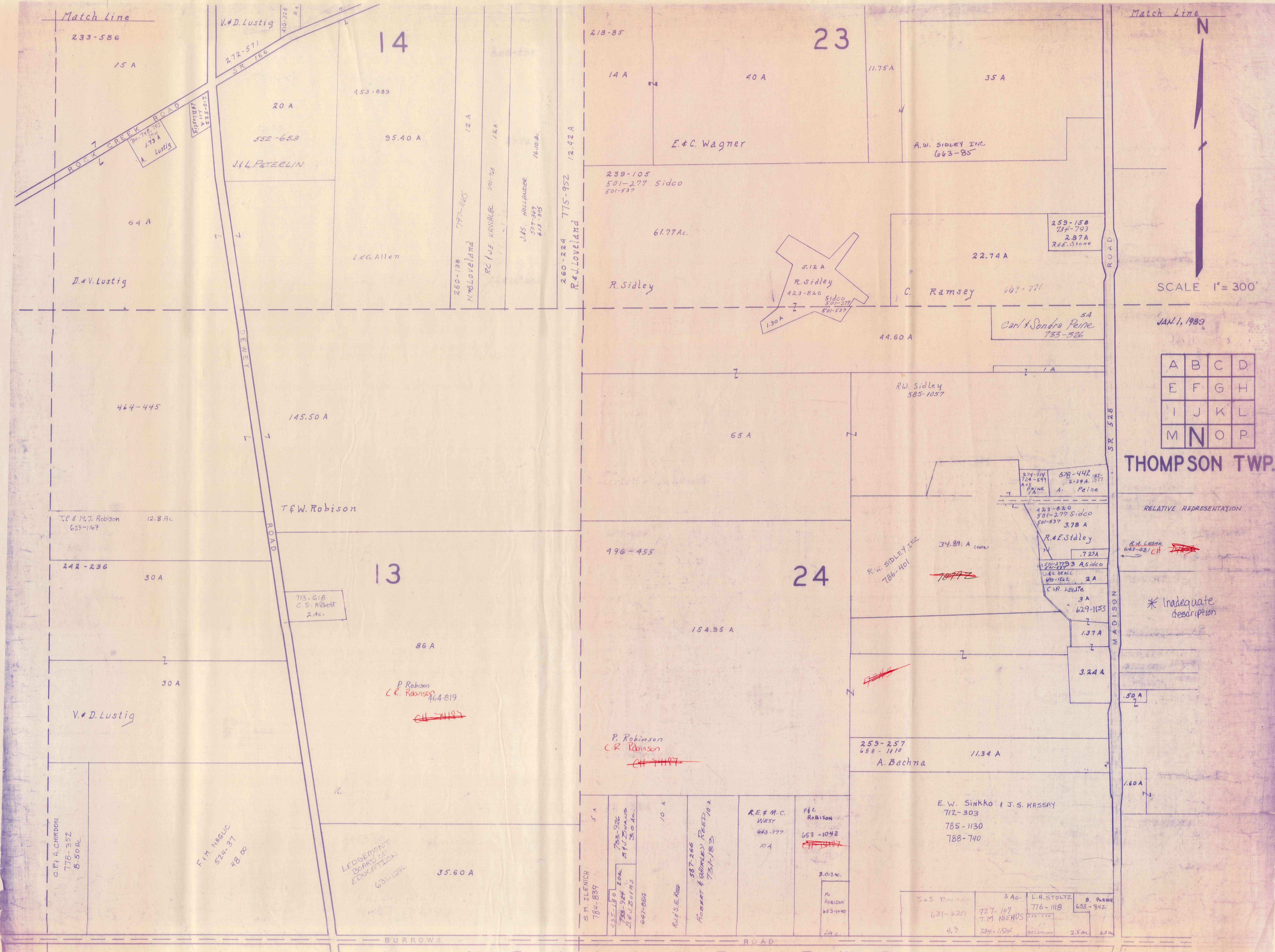
JAN. 1, 1990
 RELATIVE REPRESENTATION

| | | | |
|---|---|---|---|
| A | B | C | D |
| E | F | G | H |
| I | J | K | L |
| M | N | O | P |

* Inadequate description

M O N T V I L L E T W P.

BURROWS ROAD



Match Line

N

Match Line

SCALE 1" = 300'

JAN. 1, 1983

| | | | |
|---|---|---|---|
| A | B | C | D |
| E | F | G | H |
| I | J | K | L |
| M | N | O | P |

THOMPSON TWP

RELATIVE REPRESENTATION

* Inadequate description

233-586

15 A

V.D. Lustig

272-571

14

153-889

20 A

552-653

J. & L. PETERLIN

95.40 A

L. & G. ALLEN

218-85

14 A

23

40 A

11.75 A

35 A

E. & C. WAGNER

A. W. SIDLEY INC
663-85

64 A

D. & V. LUSTIG

12 A

12 A

12 A

260-138

797-145

N. & J. LOVELAND

RC. RUE KANALE

J. & S. HOLLENDER

16.10 A.

260-224

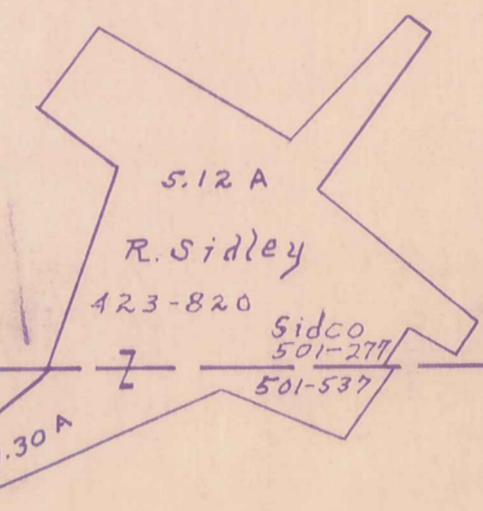
775-952

R. & J. LOVELAND

239-105
501-277 Sidco
501-537

61.77 A.

R. Sidley



22.74 A

259-158
734-793
2.87 A
R. E. Stone

C. Ramsey

667-771

44.60 A

Carl & Sandra Peine
733-526

444-445

145.50 A

CEMETERY ROAD

CEMETERY ROAD

CEMETERY ROAD

CEMETERY ROAD

CEMETERY ROAD

CEMETERY ROAD

CEMETERY ROAD

CEMETERY ROAD

CEMETERY ROAD

CEMETERY ROAD

CEMETERY ROAD

CEMETERY ROAD

CEMETERY ROAD

CEMETERY ROAD

CEMETERY ROAD

CEMETERY ROAD

CEMETERY ROAD

CEMETERY ROAD

CEMETERY ROAD

CEMETERY ROAD

CEMETERY ROAD

CEMETERY ROAD

T. P. & M. J. Robison
623-1167

12.8 Ac

T. & W. Robison

242-236

30 A

713-618
C. S. Alvord
2 Ac.

13

86 A

P. Robison
C. R. Robinson
464-819

~~CH 74187~~

196-455

65 A

24

154.35 A

R. W. Sidley
585-1057

R. W. SIDLEY INC
786-401

34.89 A

678-442
2.39 A. Peine

423-820
501-277 Sidco
501-537
3.78 A

R. & E. Sidley

1501-277 Sidco
J. V. DEAL
678-1122
2 A

C. V. LeBlanc
3 A
629-1153

1.37 A

3.24 A

.50 A

V. & D. Lustig

30 A

C. P. & A. CHARDON
778-352
8.50 Ac.

F. H. MARGIC
524-37
48.00

LEASING BOARD OF
EDUCATION
631-121K

35.60 A

5 A

S. M. ILENICH
784-839

10 A

R. J. S. E. RED

587-266

ROBERT & SHIRLEY REED
731-183

R. E. & M. C. WEST
643-777
10 A

3.013 Ac.

M. ROBINSON
653-1040
2 A

E. W. SINKO & J. S. KASSAY
712-303
785-1130
788-740

259-257
688-1110
11.34 A

A. Bachna

1.60 A

BURROWS ROAD

BURROWS ROAD

MONTEVILLE TWP

Match Line

Match Line

123-820
501-277 Sidco
501-537

26

501-277 Sidco
501-537

35

38

R. Sidley

50 A

36.25 A

165 A

M. O'Mara ET AL.
520-833
532-356

49.83 A

603-125

R. & B. Foltz

90 A

292-77

B. Bamser

677-600

615-124

49.83
w.m. + g. SHAGHNESSY
P. Landus
M. Blinniger
5037
74380

591-453

254-437
722-557

S. ERIKSEN 11677
D. H. JOHNS 807-441
339-1383/1385
388 AC
L. E. A. C. Dwyer 572-522
3.381 AC
807-441

8.63 A

94 A

954-142

16.35 A

Kennemetal Rod & Gun Club

J. Rollis
672-807

131.55 Ac.

300-149
798-380 795-1006
N.J. D. mukaitis

9.62 A

556-637

9.62 A

G. & J. L. GOEHRING

224-6
234-169

26.30 A

711-931

E. Barnum et al.

Q. Sisson
7609-8
V. Dapion

711-931

25.50 A

60.92 A

A. L. JUHAS
D. KOCIS
C. L. ANDERSON
K. TUTTLE
819-266

36

20 A

127-814
661-711*

(TOTALS
172 TAX DUPLICATE)

591-771 235 A
S. A. Bonick
218 BRADY 2A
742-592

25

424-583 *

711-931

752-210 *
PETER R TICEL 43.13 A

B. Biscoe
631-367

R. S. Tuttle
701-1393

5.176 Ac.

74.59 A

F. S. Zingale
613-977

P. R. TICEL

901-1285

C. I. S.
LUEBKING
806-756

3.025 A

D. B. WHITE
673-930

1.13 A

L. E. SCHMID
289-471

6.007 AC

M. Gurich 3/4 Int.
R. Gurich 1/4 Int.

D. W. & G. BREHM
550-1241
20.00 AC.
673-676

356-316 5A

14 A

35 A

J. Yelcho

502'
67-272
661-711*
EXCEPTING
3.50 AC
68-48
11.50 AC

| | | | |
|---|---|---|---|
| A | B | C | D |
| E | F | G | H |
| I | J | K | L |
| M | N | O | P |

THOMPSON TWP.

RELATIVE REPRESENTATION

* inadequate description

827
1468
48-48
11-11
103-10
281
98-48
C. C.
24

R. G. MORE
E. H. B. B. B.
11-11
C. L. ISSEMMANN
I. A. C.
73-150

ROAD

ROAD

MADISON

SIDLEY

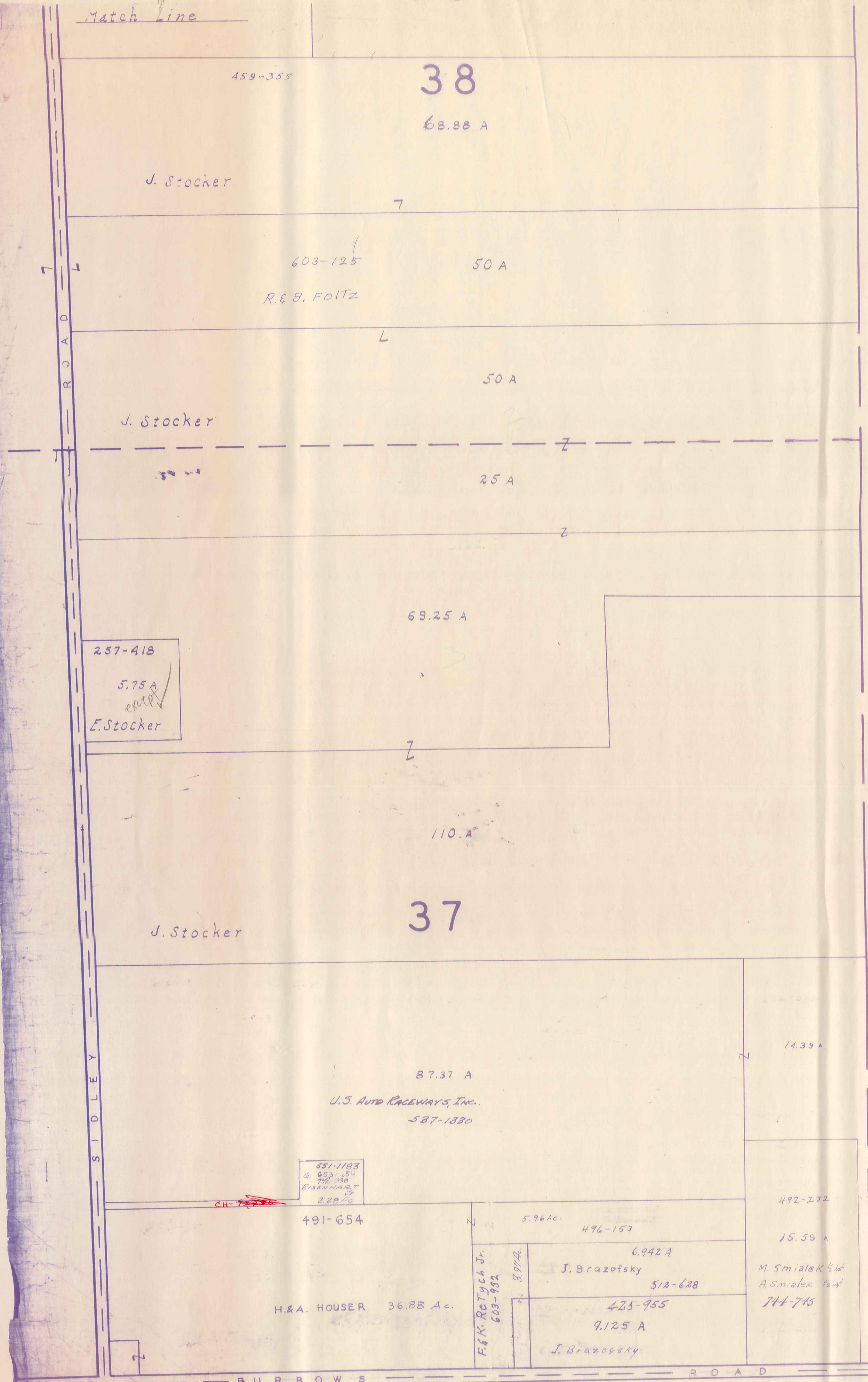
MONTVILLE TOWNSHIP



SCALE 1" = 300'
JUN 1, 1988

Match Line

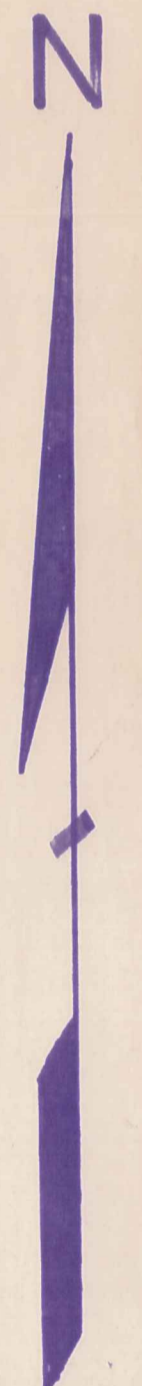
Match Line



A
S
H
T
A
B
U
L
A

C
O
U
N
T
Y

MONTVILLE TWP.



JAN 1, 1989

* Inadequate description

SCALE 1" = 300'

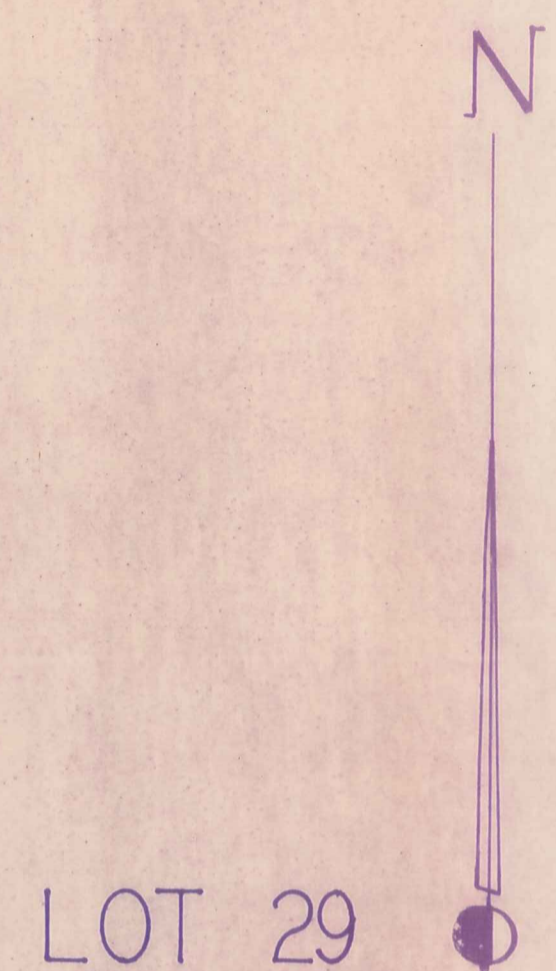
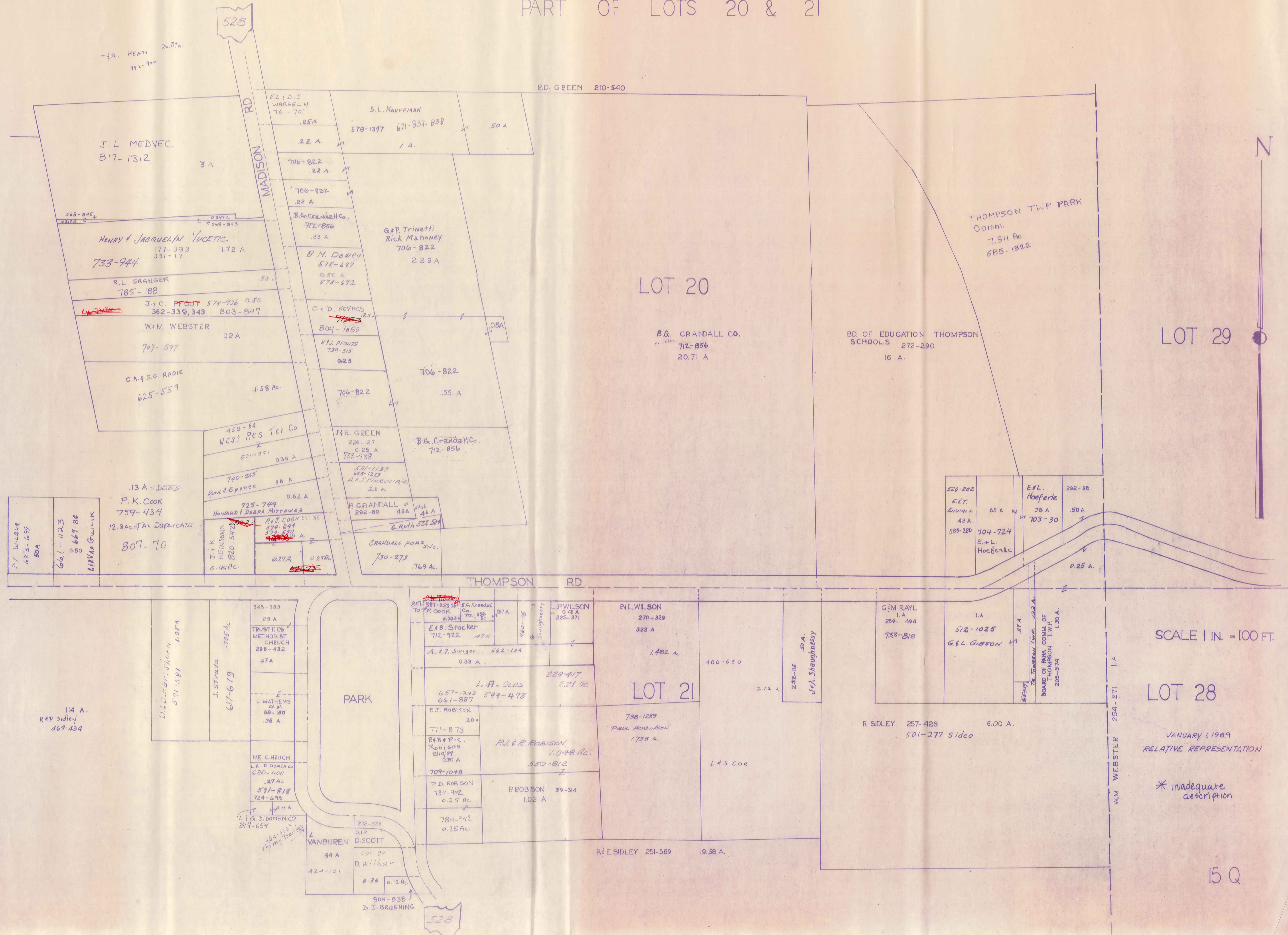
RELATIVE REPRESENTATION

| | | | |
|---|---|---|---|
| A | B | C | D |
| E | F | G | H |
| I | J | K | L |
| M | N | O | P |

THOMPSON TWP.

THOMPSON TWP.

PART OF LOTS 20 & 21



SCALE 1 IN. = 100 FT.

LOT 28
JANUARY 1, 1989
RELATIVE REPRESENTATION

* inadequate description

15 Q